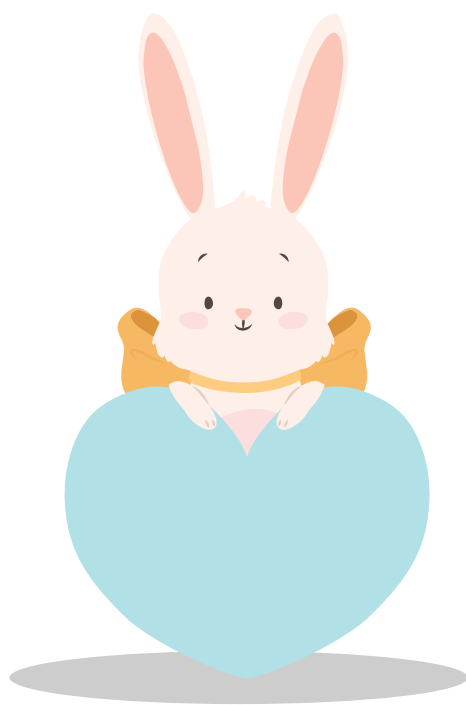


Easter Egg Exchange Game



How to play:

EVERY PLAYER PICKS AN EGG. EACH PLAYER GETS A CHANCE TO ROLL THE DIE AND PERFORM THE CORRESPONDING ACTION.


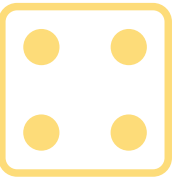
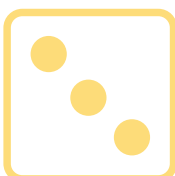
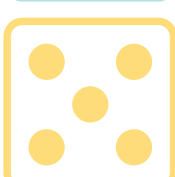
OPTION 1:
WHEN A PLAYER ROLLS A NUMBER THAT CORRESPONDS TO "KEEP YOUR EGG & EAT IT!"

THAT PLAYER IS OUT OF THE GAME AND CAN EAT THEIR EGG. THE GAME ENDS WHEN EVERY PLAYER HAS ROLLED THAT ACTION.

OPTION 2:
THE GAME ENDS WHEN THE FIRST PLAYER ROLLS A NUMBER THAT CORRESPONDS TO "KEEP YOUR EGG & EAT IT!"



Easter Egg Exchange Game

| | | | | | |
|---|---|---|--|---|---|
|  |  |  |  |  |  |
|  | KEEP YOUR EGG & EAT IT! | EVERYONE PASS RIGHT | TRADE WITH SOMEONE OLDER THAN YOU | TRADE WITH PLAYER TO THE RIGHT | TRADE WITH SOMEONE WITH LONG HAIR |
|  | TRADE WITH SOMEONE SHORTER THAN YOU | KEEP YOUR EGG & EAT IT! | TRADE WITH SOMEONE WITH LIGHT HAIR | TRADE WITH SOMEONE WEARING BLUE | TRADE WITH ANYONE |
|  | TRADE WITH ANYONE | TRADE WITH A CAT OWNER | KEEP YOUR EGG & EAT IT! | EVERYONE PASS LEFT | TRADE WITH SOMEONE WITH DARK HAIR |
|  | ROLL AGAIN | TRADE FOR A BLUE EGG | TRADE WITH SOMEONE WITH SHORT HAIR | KEEP YOUR EGG & EAT IT! | TRADE WITH PLAYER TO THE LEFT |
|  | TRADE WITH SOMEONE WEARING RED | TRADE WITH PLAYER TO THE LEFT | TRADE FOR A PINK EGG | TRADE WITH SOMEONE YOUNGER THAN YOU | KEEP YOUR EGG & EAT IT! |
|  | TRADE WITH SOMEONE WEARING PINK | TRADE WITH PLAYER TO THE RIGHT | TRADE FOR A GREEN EGG | TRADE WITH SOMEONE TALLER THAN YOU | TRADE WITH ANYONE |
| | | | | | KEEP YOUR EGG & EAT IT! |